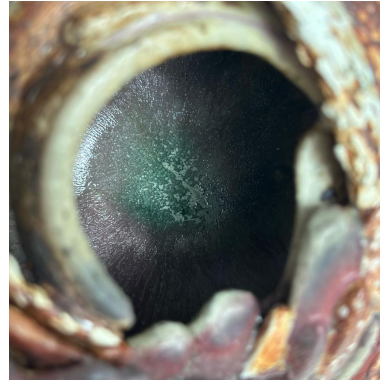


Hiroko Mita

b. 1971, Japan



Line Series: Embrace, 2019

H 20 x 25 x 20 cm

Stoneware, Singapore Local Clay

Gas Reduction fired to 1300°C

Intricate strands of clay representing the different people, corporations, and organisations. All are unique in race, religion, culture, age, and gender. Each strand plays a part, together they create many shapes and ascend to greater heights in unison. Like an orchestra performing, each instrument creates a different sound and tune. On their own, they produce beautiful music. When combined, they become a masterpiece, dynamic and magnificent. The works represent unity, as each line intertwines harmoniously, as they overcome challenges and achieve great heights for the two Nations for many generations to come.